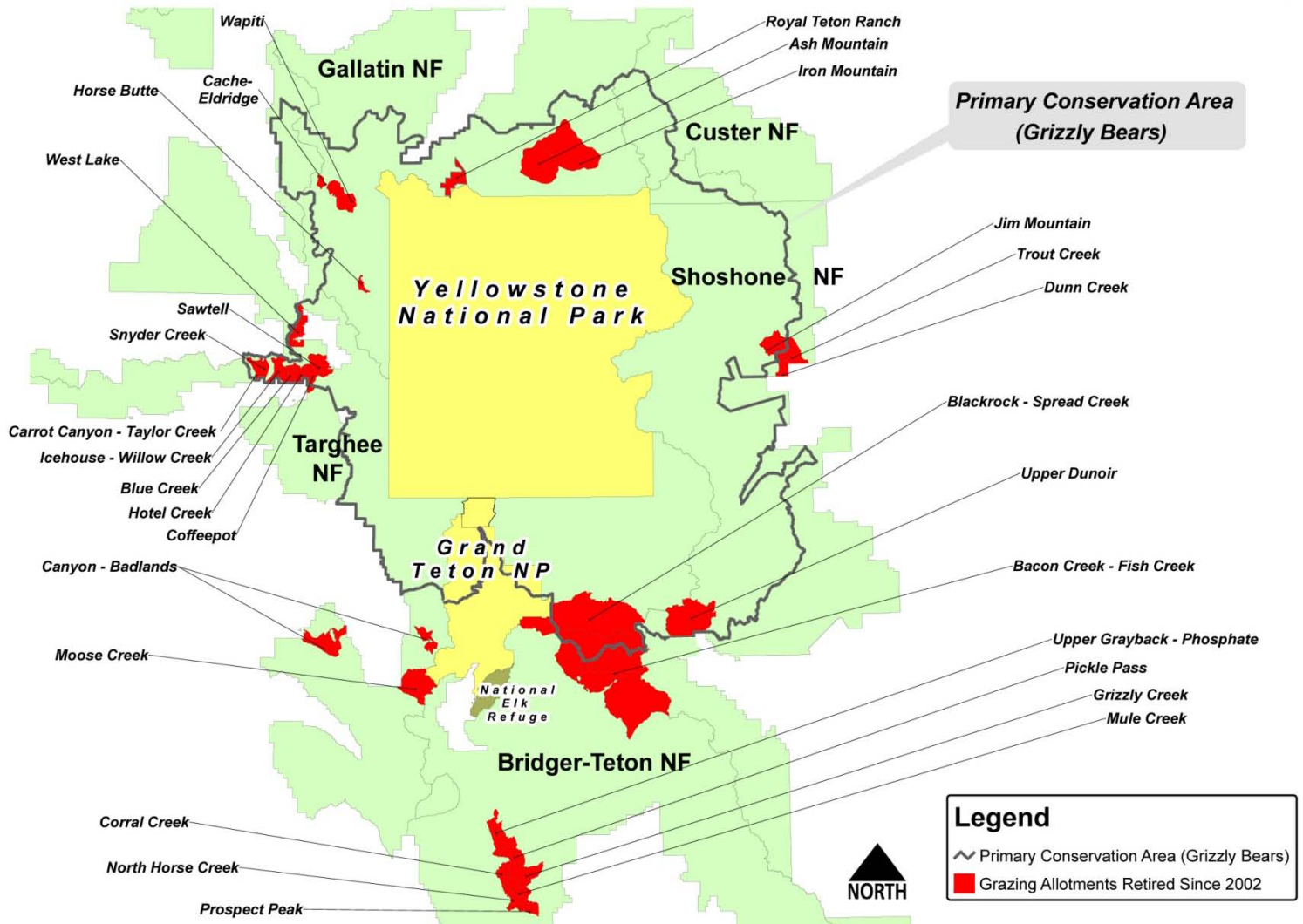




# National Wildlife Federation\* Grazing Allotment Retirements in the Greater Yellowstone Ecosystem (2002-2010)

\*NWF has been a leader on many of these projects and a partner with the Wyoming Chapter of the Foundation for North American Wild Sheep (FNAWS) on the others. **Please see chart below map.**



Name [Number] of Allotment	Location/National Forest	Size [Acres]	Type of Livestock	Completion Date	Nature of Conflict*
Horse Butte [1]	SW MT/Gallatin	2,200	Cattle	Apr 2003	B
Blackrock/Spread Creek [2]	NW WY/Bridger-Teton	87,000	Cattle	Aug 2003	GB, W, B
Moose Creek [1]	NW WY/Caribou-Targhee	24,500	Sheep	Jan 2004	GB, W
Island Park (Carrot Canyon/ Snyder Creek/West Lake) [3]	E ID/Targhee	12,526	Sheep	Apr 2004	GB, W
Canyon Badlands [2]	NW WY/Targhee	12,000	Sheep	May 2004	GB, W
Jim Mntn/Dunn + Trout creeks [3]	NW WY/Shoshone	16,800	Sheep	May 2005	GB, W, BHS
Wyoming Range [7]	NW WY/Bridger-Teton	67,500	Sheep	May 2005	W, BHS
Ash Mountain/Iron Mountain [2]	SW MT/Gallatin	74,000	Sheep	Feb 2006	GB, W, BHS
Bacon Creek/Fish Creek [2]	NW WY/Bridger-Teton	178,000	Cattle	Jan 2007	GB, W, Elk, Moose
Icehouse-Willow Creek/Blue Creek/ Coffeepot/Sawtell/ /Hotel Creek [5]	E ID/Caribou-Targhee	33,714	Sheep	Feb 2008	GB, W
Upper Dunoir [1]	NW WY/Shoshone	34,500	Cattle	Feb 2008	GB, W
Cache-Eldridge [1]	SW MT/Gallatin	9,200	Cattle	Feb 2008	B, GB, W
Royal Teton Ranch [1]	SW MT/Gallatin	6,000	Cattle	Dec 2009	B
Wapiti [1]	SW MT/Gallatin	8,180	Cattle	April 2010	B, GB, W
<b>TOTAL Allotments [32]</b>		<b>566,120</b>			

\* GB=Grizzly Bears - W=Wolves - B=Bison - BHS=Bighorn Sheep